

EMBARGOED UNTIL RELEASE AT 8:30 A.M. EDT, THURSDAY, October 26, 2006

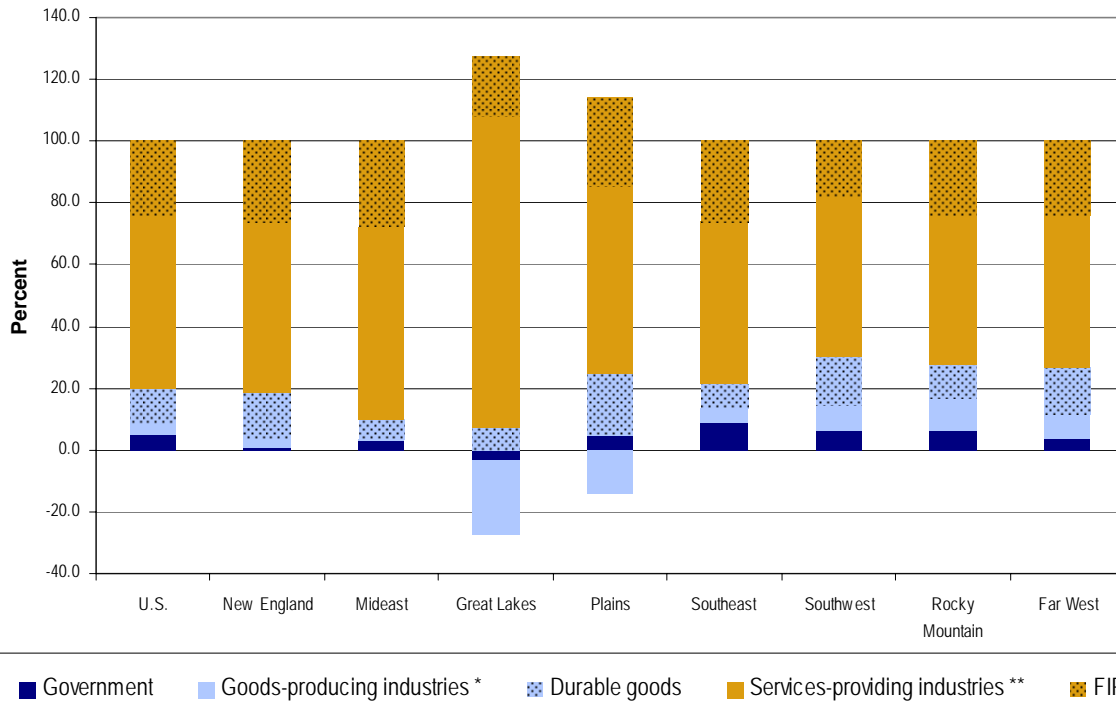
Clifford Woodruff: (202) 606-9234  
E-mail inquiries: [gdpbystate@bea.gov](mailto:gdpbystate@bea.gov)

BEA 06-47

**Services and Goods Sectors Contribute to Strong Growth  
in Gross Domestic Product (GDP) by State in 2005**  
*Advance Estimates of GDP by State for 2005 by NAICS Sector*

Newly available data on the 2005 state distribution of GDP, released today by the U.S. Bureau of Economic Analysis, showed that private services-providing industries accounted for more than 80 percent of real growth in the Great Lakes, Mideast, Plains, and New England regions (chart 1).<sup>1</sup> In 2005, real U.S. growth in the services and goods sectors remained strong. Private services-providing industries grew 4.1 percent, and private goods-producing industries grew 2.6

**Chart 1. Contribution to Percent Change in Real GDP by State, 2004-2005**



<sup>1</sup> The 2005 estimates draw heavily on the 2005 revised state earnings-by-industry estimates released on September 26, 2006.

\* Goods-producing industries excluding durable goods.

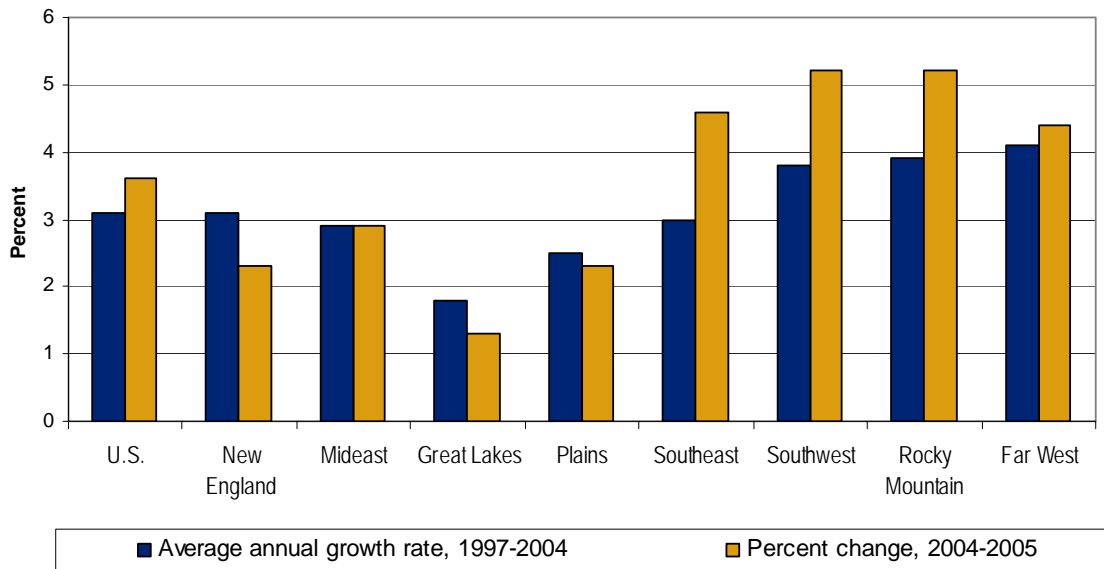
\*\* Services-providing industries excluding FIRE.

FIRE Finance, insurance, real estate, rental, and leasing.

percent. Overall, real U.S. GDP by state grew 3.6 percent in 2005, compared with the 1997–2004 average annual growth rate of 3.1 percent (chart 2).

As of this release, the Bureau of Economic Analysis (BEA) is changing the name of its gross state product (GSP) series to gross domestic product (GDP) by state. This series, as of the December 2004 comprehensive revision, is consistent with the national measure of GDP. The new name, GDP by state, is also consistent with terminology used by statistical agencies in most other developed countries.

**Chart 2. Growth Rates in Real GDP by State, 1997-2005**

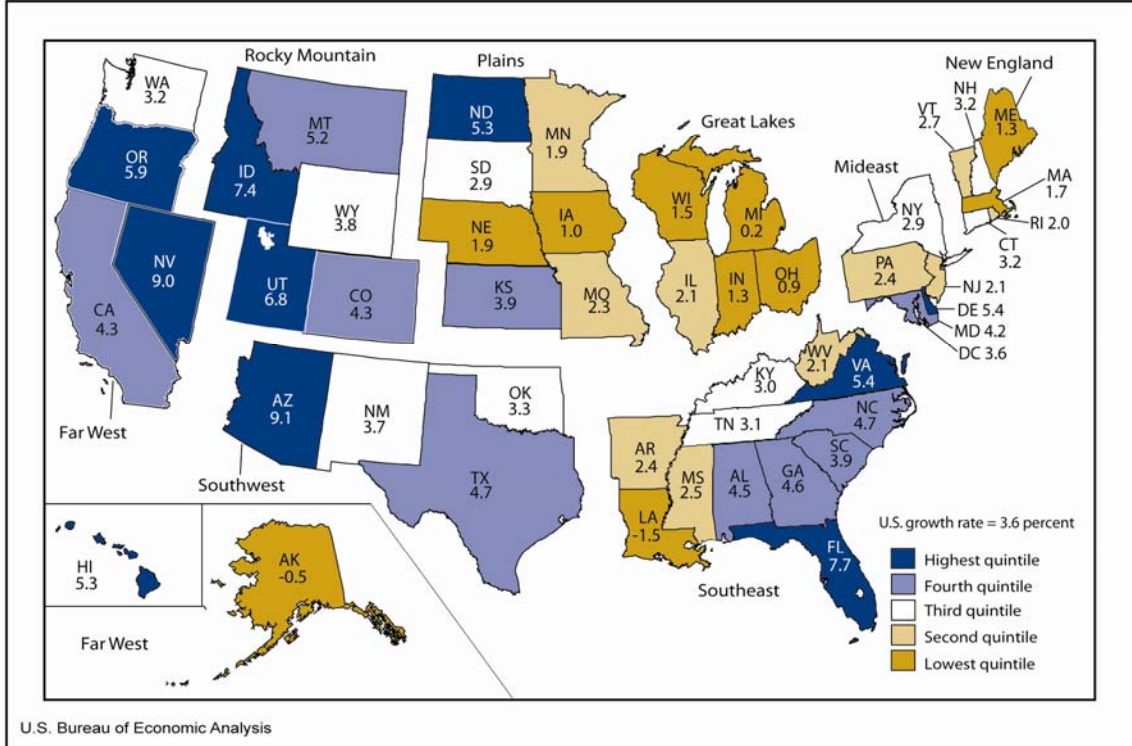


### States and Regions

The Southwest and Rocky Mountain regions grew the fastest in 2005 (5.2 percent). Growth in private services-providing industries slightly outpaced growth in private goods-producing industries (5.7 percent to 5.0 percent in the Southwest region, 5.7 percent to 5.3 percent in the Rocky Mountain region). Within the Southwest, Arizona posted the strongest growth (9.1 percent)—the fastest in the Nation (chart 3). The only state in the Rocky Mountain and Southwest regions with slower growth than the Nation was Oklahoma (3.3 percent).

The Great Lakes region experienced the slowest growth in 2005 (1.3 percent). Private services-providing industries (2.2 percent growth) performed much better than the private goods-producing industries (0.8 percent decline).

Chart 3. Percent Change in Real GDP by State, 2004-2005



### NAICS Industry Sectors<sup>2</sup>

The two NAICS sectors with the largest contributions to growth were finance and insurance, and professional and technical services, which together contributed more than 28 percent to real U.S. growth. Finance and insurance grew 6.7 percent in 2005 and professional and technical services grew 7.0 percent. In the 8 BEA regions, the contributions to real GDP-by-state growth from these two sectors ranged from a high of 47 percent in the Great Lakes to a low of 21 percent in the Southwest. One of these two sectors was the largest contributor to growth in 19 states.

In addition to the strong growth in private services-providing industries, the manufacturing sector continued its strong U.S. growth, increasing 4.0 percent. In the Southwest and Far West regions, durable goods manufacturing contributed the most to real GDP-by-state growth of the industry sectors in Table 2. Durable goods manufacturing was the largest contributor to growth in 10 states.

<sup>2</sup> NAICS North American Industry Classification System

## Revisions

The revisions to the advance GDP-by-state estimates for 2005, released in June 2006, are due to the incorporation of farm income and expense data from the U.S. Department of Agriculture (USDA) and the incorporation of revised BEA earnings-by-industry data.

The growth rate in real GDP by state for the New England region was revised down 0.7 percentage point. The growth rates of real GDP by state for the Southeast and Southwest regions were each revised up 0.3 percentage point. In New England, the two states with the largest downward revisions were New Hampshire (1.2 percentage points) and Massachusetts (0.9 percentage point). In the Southeast, the growth rates for Alabama, Mississippi, and Tennessee were revised up by more than 1.0 percentage point.

Tables 1-3 show these results in more detail; complete detail is available on BEA's web site at [www.bea.gov](http://www.bea.gov).

BEA's national, international, regional, and industry estimates; the *Survey of Current Business*; and BEA news releases are available without charge on BEA's Web site at [www.bea.gov](http://www.bea.gov). By visiting the site, you can also subscribe to receive free e-mail summaries of BEA releases and announcements.

## Advance Estimates of GDP by state for 2005 by NAICS Sector

For the second year, BEA is releasing advance GDP-by-state estimates. In June 2006, BEA released advance 2005 GDP-by-state totals. This release provides revised 2005 GDP-by-state totals, plus both current-dollar and real 2005 GDP-by-state estimates by NAICS sectors.

These accelerated industry estimates for 2005 are based on an abbreviated estimation methodology using limited state source data. The accelerated 2005 estimates are based on BEA earnings by industry estimates released September 26, 2006 and on the accelerated U.S. GDP by industry estimates released April 27, 2006. In addition, farm income and expense data from the USDA are incorporated into the agriculture, forestry, fishing, and hunting industry.

More information on the methodology used to produce the advance 2005 estimates, on the regular (revised) GDP-by-state estimates for 1998–2004, and on revisions to the GDP-by-state estimates can be found in the July 2006 issue of the *Survey of Current Business*, BEA's monthly journal.

## Explanatory Notes

### Definitions

GDP by state is the state counterpart of the Nation's gross domestic product (GDP), the Bureau's featured and most comprehensive measure of U.S. economic activity. GDP by state is derived as the sum of the GDP originating in all the industries in the state.

Real GDP by state is an inflation-adjusted measure based on national prices for the goods and services produced within that state. The estimates of real GDP by state and of quantity indexes with a base year of 2000 are derived by applying national implicit price deflators to the current-dollar GDP-by-state estimates for the 81 NAICS industries for years 1997 forward and for the 63 SIC industries for years 1977–1997. Then, the chain-type index formula that is used in the national accounts is used to calculate the estimates of total real GDP by state and of real GDP by state at more aggregated industry levels.

### The relation of GDP by state to U.S. Gross Domestic Product (GDP)

An industry's GDP by state, or its value added, in practice, is calculated as the sum of incomes earned by labor and capital and the costs incurred in the production of goods and services. That is, it includes the wages and salaries that workers earn, the income earned by individual or joint entrepreneurs as well as by corporations, and business taxes such as sales, property, and Federal excise taxes—that count as a business expense.

GDP is calculated as the sum of what consumers, businesses, and government spend on final goods and services, plus investment and net foreign trade. In theory, incomes earned should equal what is spent, but due to different data sources, income earned, usually referred to as gross domestic income (GDI) does not always equal what is spent (GDP). The difference is referred to as the “statistical discrepancy.”

Starting with the 2004 comprehensive revision, BEA's industry accounts and its GDP-by-state accounts allocate the statistical discrepancy across all private-sector industries. Therefore, GDP-by-state estimates are now conceptually more similar to GDP estimates in the national accounts than they had been in the past.

Except for small differences resulting from the GDP-by-state accounts excluding overseas Federal military and civilian activity (because it cannot be attributed to a particular state), growth rates of real GDP by state and real U.S. GDP are now virtually identical.

**Table 1. Growth Rates in Real GDP by State, 1997-2005**

	Average annual growth rate 1997-2004		Percent change 2004-2005	
	Percent	Rank	Percent	Rank
<b>United States</b>	<b>3.1</b>	....	<b>3.6</b>	....
<b>New England</b>	<b>3.1</b>	....	<b>2.3</b>	....
Connecticut	2.0	39	3.2	24
Maine	2.3	33	1.3	44
Massachusetts	3.7	13	1.7	42
New Hampshire	4.1	9	3.2	25
Rhode Island	3.1	20	2.0	39
Vermont	4.1	10	2.7	31
<b>Mideast</b>	<b>2.9</b>	....	<b>2.9</b>	....
Delaware	3.0	23	5.4	8
District of Columbia	3.0	....	3.6	....
Maryland	3.6	14	4.2	18
New Jersey	2.6	29	2.1	36
New York	3.2	16	2.9	30
Pennsylvania	2.2	38	2.4	34
<b>Great Lakes</b>	<b>1.8</b>	....	<b>1.3</b>	....
Illinois	2.0	41	2.1	37
Indiana	2.6	28	1.3	45
Michigan	1.1	48	0.2	48
Ohio	1.6	44	0.9	47
Wisconsin	2.5	31	1.5	43
<b>Plains</b>	<b>2.5</b>	....	<b>2.3</b>	....
Iowa	2.2	36	1.0	46
Kansas	2.3	35	3.9	19
Minnesota	3.5	15	1.9	40
Missouri	1.6	42	2.3	35
Nebraska	2.0	40	1.9	41
North Dakota	2.3	34	5.3	10
South Dakota	4.1	8	2.9	29
<b>Southeast</b>	<b>3.0</b>	....	<b>4.6</b>	....
Alabama	2.5	30	4.5	15
Arkansas	2.6	27	2.4	33
Florida	4.2	7	7.7	3
Georgia	3.2	18	4.6	14
Kentucky	1.3	46	3.0	28
Louisiana	0.9	49	-1.5	50
Mississippi	1.6	43	2.5	32
North Carolina	3.1	21	4.7	13
South Carolina	2.2	37	3.9	20
Tennessee	2.9	24	3.1	27
Virginia	4.0	11	5.4	7
West Virginia	1.2	47	2.1	38
<b>Southwest</b>	<b>3.8</b>	....	<b>5.2</b>	....
Arizona	5.2	1	9.1	1
New Mexico	3.2	17	3.7	22
Oklahoma	2.4	32	3.3	23
Texas	3.7	12	4.7	12
<b>Rocky Mountain</b>	<b>3.9</b>	....	<b>5.2</b>	....
Colorado	4.3	5	4.3	16
Idaho	5.0	2	7.4	4
Montana	2.7	26	5.2	11
Utah	3.2	19	6.8	5
Wyoming	3.0	22	3.8	21
<b>Far West</b>	<b>4.1</b>	....	<b>4.4</b>	....
Alaska	0.8	50	-0.5	49
California	4.4	4	4.3	17
Hawaii	1.4	45	5.3	9
Nevada	4.8	3	9.0	2
Oregon	4.3	6	5.9	6
Washington	2.9	25	3.2	26

Source: U.S. Bureau of Economic Analysis

Table 2. Contributions to Percent Change in Real GDP by State, 2004-2005

State and region	Percent change in real gross state product	Percentage points										
		Agriculture, forestry, fishing, and hunting	Mining	Utilities	Construction	Durable goods manufacturing	Non-durable goods manufacturing	Wholesale trade	Retail trade	Transportation and warehousing	Information	Finance and insurance
<b>United States</b>	<b>3.6</b>	<b>-0.05</b>	<b>-0.04</b>	<b>0.01</b>	<b>0.13</b>	<b>0.40</b>	<b>0.08</b>	<b>0.07</b>	<b>0.20</b>	<b>0.11</b>	<b>0.34</b>	<b>0.54</b>
<b>New England</b>	<b>2.3</b>	<b>0.05</b>	<b>-0.01</b>	<b>-0.08</b>	<b>-0.04</b>	<b>0.35</b>	<b>0.05</b>	<b>-0.14</b>	<b>0.06</b>	<b>0.03</b>	<b>0.32</b>	<b>0.29</b>
Connecticut	3.2	0.02	0.00	-0.20	0.02	0.28	0.01	0.08	0.06	0.05	0.29	1.25
Maine	1.3	0.15	0.00	0.04	-0.12	0.05	0.08	-0.11	-0.05	0.03	0.25	0.05
Massachusetts	1.7	0.04	-0.01	-0.03	-0.08	0.36	0.09	-0.34	0.05	0.02	0.36	-0.32
New Hampshire	3.2	0.05	0.00	-0.24	0.00	0.72	0.00	0.06	0.13	0.01	0.33	0.65
Rhode Island	2.0	0.01	0.01	0.03	0.02	0.17	0.01	0.13	0.01	-0.01	0.32	0.30
Vermont	2.7	0.36	-0.08	0.01	0.02	0.83	0.05	-0.13	0.18	0.03	0.22	0.28
<b>Mideast</b>	<b>2.9</b>	<b>0.03</b>	<b>0.00</b>	<b>-0.02</b>	<b>0.00</b>	<b>0.18</b>	<b>-0.01</b>	<b>-0.02</b>	<b>0.13</b>	<b>0.06</b>	<b>0.41</b>	<b>0.76</b>
Delaware	5.4	0.09	(d)	0.02	(d)	0.12	-0.28	-0.05	0.12	0.01	0.22	4.62
District of Columbia	3.6	0.00	(d)	0.06	(d)	-0.03	0.00	0.02	0.04	-0.01	0.47	-0.16
Maryland	4.2	-0.01	0.01	0.10	0.14	0.11	0.04	0.06	0.14	0.09	0.35	0.62
New Jersey	2.1	0.02	0.00	-0.03	-0.04	0.09	0.05	-0.09	0.06	0.11	0.24	0.59
New York	2.9	0.04	0.00	-0.02	-0.07	0.12	-0.02	-0.06	0.17	0.05	0.63	0.96
Pennsylvania	2.4	0.06	-0.01	-0.08	0.08	0.43	-0.06	0.09	0.10	0.05	0.16	0.29
<b>Great Lakes</b>	<b>1.3</b>	<b>-0.21</b>	<b>-0.02</b>	<b>0.06</b>	<b>-0.09</b>	<b>0.09</b>	<b>0.02</b>	<b>-0.02</b>	<b>0.01</b>	<b>0.15</b>	<b>0.20</b>	<b>0.28</b>
Illinois	2.1	-0.43	-0.01	0.06	-0.05	0.38	0.06	-0.05	0.09	0.19	0.25	0.31
Indiana	1.3	-0.35	-0.03	0.05	-0.06	0.28	0.04	0.05	0.08	0.16	0.12	0.14
Michigan	0.2	0.01	-0.02	0.03	-0.18	-0.54	-0.10	-0.11	-0.09	0.07	0.25	0.27
Ohio	0.9	-0.03	-0.04	0.12	-0.12	-0.03	0.03	-0.02	-0.06	0.19	0.14	0.33
Wisconsin	1.5	-0.20	-0.01	0.01	-0.06	0.32	0.02	0.12	0.01	0.15	0.25	0.32
<b>Plains</b>	<b>2.3</b>	<b>-0.40</b>	<b>0.02</b>	<b>-0.04</b>	<b>-0.04</b>	<b>0.46</b>	<b>0.10</b>	<b>0.09</b>	<b>0.04</b>	<b>0.15</b>	<b>0.26</b>	<b>0.49</b>
Iowa	1.0	-1.98	-0.01	-0.35	0.11	0.71	0.33	0.17	-0.02	0.18	0.21	0.81
Kansas	3.9	0.65	-0.02	0.07	0.05	0.63	0.07	0.07	0.04	0.12	0.17	0.29
Minnesota	1.9	0.02	-0.02	-0.02	-0.23	0.41	0.04	0.08	-0.06	0.10	0.27	0.49
Missouri	2.3	-0.46	0.09	-0.03	0.03	0.27	0.04	0.09	0.15	0.10	0.31	0.31
Nebraska	1.9	-1.00	-0.01	-0.05	-0.09	0.39	0.15	-0.04	0.05	0.47	0.23	0.72
North Dakota	5.3	1.30	0.35	0.10	0.00	0.55	0.07	0.31	0.27	0.20	0.29	0.14
South Dakota	2.9	-1.12	-0.01	0.22	0.09	0.64	0.11	0.12	0.16	0.08	0.35	1.20
<b>Southeast</b>	<b>4.6</b>	<b>-0.01</b>	<b>-0.12</b>	<b>0.00</b>	<b>0.27</b>	<b>0.37</b>	<b>0.08</b>	<b>0.13</b>	<b>0.32</b>	<b>0.11</b>	<b>0.40</b>	<b>0.54</b>
Alabama	4.5	0.00	0.00	-0.14	0.17	1.05	-0.05	0.13	0.37	0.17	0.27	0.45
Arkansas	2.4	-1.33	0.07	0.08	0.24	0.37	0.01	0.21	0.23	0.23	0.34	0.23
Florida	7.7	0.11	0.00	0.02	0.73	0.33	0.07	0.26	0.54	0.15	0.40	0.78
Georgia	4.6	-0.03	-0.03	0.03	0.13	0.28	0.12	0.20	0.27	-0.01	0.62	0.43
Kentucky	3.0	0.28	0.06	0.05	-0.03	0.36	-0.06	-0.05	0.13	0.12	0.21	0.31
Louisiana	-1.5	-0.05	-1.66	-0.07	-0.07	-0.04	0.48	-0.04	0.03	0.02	0.14	0.22
Mississippi	2.5	-0.23	-0.09	0.08	0.34	0.43	0.03	0.04	0.27	0.10	0.25	0.24
North Carolina	4.7	-0.02	0.01	-0.04	0.15	0.46	0.16	0.08	0.29	0.06	0.60	1.02
South Carolina	3.9	-0.09	-0.02	-0.03	0.05	0.48	-0.03	0.34	0.29	0.09	0.30	0.38
Tennessee	3.1	0.06	-0.01	0.00	0.10	0.36	0.06	0.05	0.34	0.23	0.26	0.02
Virginia	5.4	0.03	-0.01	0.06	0.19	0.33	0.06	0.01	0.23	0.14	0.49	0.63
West Virginia	2.1	0.06	0.04	-0.05	0.16	0.06	-0.22	0.17	0.16	0.14	0.11	0.11
<b>Southwest</b>	<b>5.2</b>	<b>-0.02</b>	<b>-0.01</b>	<b>0.06</b>	<b>0.30</b>	<b>0.82</b>	<b>0.19</b>	<b>0.20</b>	<b>0.38</b>	<b>0.18</b>	<b>0.27</b>	<b>0.61</b>
Arizona	9.1	0.00	-0.03	0.18	0.84	1.16	0.05	0.21	0.82	0.20	0.21	1.47
New Mexico	3.7	0.10	-0.42	0.08	0.30	1.19	0.01	0.06	0.24	0.13	0.25	0.19
Oklahoma	3.3	0.02	0.91	0.08	0.12	0.18	0.06	0.13	0.26	0.10	0.25	0.08
Texas	4.7	-0.03	-0.08	0.03	0.21	0.80	0.24	0.21	0.30	0.19	0.29	0.52
<b>Rocky Mountain</b>	<b>5.2</b>	<b>0.05</b>	<b>0.08</b>	<b>0.03</b>	<b>0.34</b>	<b>0.56</b>	<b>0.08</b>	<b>0.13</b>	<b>0.31</b>	<b>0.15</b>	<b>0.42</b>	<b>0.54</b>
Colorado	4.3	0.04	0.02	-0.01	0.21	0.34	0.09	0.03	0.18	0.07	0.42	0.51
Idaho	7.4	-0.12	0.01	0.04	0.52	1.76	0.04	0.38	0.89	0.16	0.39	0.64
Montana	5.2	0.29	0.12	0.07	0.50	0.19	0.09	0.16	0.20	0.26	0.24	0.40
Utah	6.8	0.02	0.35	0.07	0.50	0.69	0.08	0.22	0.36	0.21	0.63	0.74
Wyoming	3.8	0.18	-0.27	0.25	0.34	0.15	0.16	0.18	0.23	0.51	0.07	0.14
<b>Far West</b>	<b>4.4</b>	<b>0.00</b>	<b>-0.09</b>	<b>0.01</b>	<b>0.26</b>	<b>0.66</b>	<b>0.18</b>	<b>0.14</b>	<b>0.27</b>	<b>0.07</b>	<b>0.40</b>	<b>0.61</b>
Alaska	-0.5	0.05	-2.19	0.03	0.12	0.04	0.10	0.02	0.08	-0.31	0.17	0.18
California	4.3	0.01	-0.06	0.02	0.20	0.56	0.22	0.17	0.24	0.05	0.48	0.64
Hawaii	5.3	0.01	0.00	0.03	0.65	0.03	0.02	0.03	0.33	0.40	0.17	0.11
Nevada	9.0	0.02	-0.06	-0.02	1.11	0.28	0.07	0.23	0.56	0.27	0.44	1.32
Oregon	5.9	0.15	0.00	-0.08	0.25	2.30	0.03	0.17	0.21	0.12	0.16	0.47
Washington	3.2	-0.13	-0.01	0.00	0.21	0.76	0.06	-0.05	0.41	0.08	0.15	0.42

(d) Data are suppressed to avoid disclosure of confidential information.  
Source: U.S. Bureau of Economic Analysis

**Table 2. Contributions to Percent Change in Real GDP by State, 2004-2005 (continued)**

State and region	Percentage points									
	Real estate, rental, and leasing	Professional and technical services	Management of companies	Administrative and waste services	Educational services	Health care and social assistance	Arts, entertainment, and recreation	Accommodation and food services	Other services	Government
<b>United States</b>	<b>0.32</b>	<b>0.48</b>	<b>0.01</b>	<b>0.21</b>	<b>0.01</b>	<b>0.33</b>	<b>0.02</b>	<b>0.13</b>	<b>0.06</b>	<b>0.18</b>
<b>New England</b>	<b>0.30</b>	<b>0.51</b>	<b>-0.04</b>	<b>0.14</b>	<b>-0.03</b>	<b>0.40</b>	<b>0.02</b>	<b>0.05</b>	<b>0.04</b>	<b>0.02</b>
Connecticut	0.53	0.37	-0.09	0.12	-0.01	0.32	0.03	0.05	0.04	0.03
Maine	0.20	0.21	-0.27	0.12	0.01	0.41	0.02	0.08	0.05	0.09
Massachusetts	0.23	0.69	0.01	0.16	-0.06	0.44	0.01	0.06	0.03	0.00
New Hampshire	0.44	0.43	-0.04	0.15	0.02	0.43	-0.01	0.01	0.03	0.05
Rhode Island	-0.05	0.25	0.05	0.14	0.03	0.40	0.05	0.07	0.07	-0.05
Vermont	-0.27	0.37	0.00	0.01	0.04	0.50	0.03	0.08	-0.01	0.22
<b>Mideast</b>	<b>0.03</b>	<b>0.52</b>	<b>0.03</b>	<b>0.16</b>	<b>0.01</b>	<b>0.33</b>	<b>0.02</b>	<b>0.10</b>	<b>0.09</b>	<b>0.08</b>
Delaware	-0.48	0.21	-0.28	0.18	0.00	0.31	0.01	0.05	0.05	0.22
District of Columbia	-0.16	0.79	0.06	0.24	-0.10	0.05	0.13	0.25	0.37	1.67
Maryland	0.33	0.81	0.06	0.19	0.02	0.35	0.05	0.15	0.06	0.54
New Jersey	-0.09	0.48	0.08	0.14	0.00	0.33	0.01	0.10	0.08	0.00
New York	0.01	0.50	-0.03	0.19	0.02	0.30	0.00	0.09	0.08	-0.04
Pennsylvania	0.13	0.43	0.10	0.11	0.01	0.40	0.02	0.08	0.08	-0.09
<b>Great Lakes</b>	<b>-0.04</b>	<b>0.33</b>	<b>-0.04</b>	<b>0.15</b>	<b>0.01</b>	<b>0.31</b>	<b>0.01</b>	<b>0.06</b>	<b>0.03</b>	<b>-0.04</b>
Illinois	0.10	0.52	0.04	0.17	0.00	0.29	0.03	0.13	0.04	-0.02
Indiana	0.04	0.23	-0.06	0.16	0.02	0.33	0.00	0.06	0.04	0.02
Michigan	-0.18	0.34	-0.23	0.25	0.02	0.46	0.01	0.01	0.02	-0.03
Ohio	-0.21	0.25	0.03	0.10	0.00	0.29	0.01	0.03	0.00	-0.09
Wisconsin	0.02	0.23	-0.09	0.13	0.01	0.29	0.01	0.06	0.04	-0.08
<b>Plains</b>	<b>0.17</b>	<b>0.30</b>	<b>0.01</b>	<b>0.15</b>	<b>0.01</b>	<b>0.30</b>	<b>0.00</b>	<b>0.08</b>	<b>0.04</b>	<b>0.10</b>
Iowa	-0.04	0.13	0.16	0.08	0.00	0.27	0.02	0.09	0.03	0.08
Kansas	0.26	0.45	0.03	0.49	0.00	0.32	-0.01	0.04	0.05	0.17
Minnesota	0.33	0.26	-0.25	0.10	0.01	0.30	-0.03	0.06	0.03	0.04
Missouri	0.07	0.36	0.19	0.13	0.03	0.30	0.02	0.12	0.05	0.11
Nebraska	0.01	0.33	0.08	0.10	0.00	0.31	0.02	0.06	0.05	0.08
North Dakota	0.21	0.38	-0.03	0.18	0.01	0.43	0.02	0.10	0.08	0.32
South Dakota	0.50	0.26	-0.07	-0.06	0.02	0.32	0.06	0.04	-0.08	0.10
<b>Southeast</b>	<b>0.67</b>	<b>0.47</b>	<b>0.04</b>	<b>0.32</b>	<b>0.01</b>	<b>0.34</b>	<b>0.03</b>	<b>0.17</b>	<b>0.06</b>	<b>0.41</b>
Alabama	0.34	0.23	0.09	0.24	-0.01	0.49	0.02	0.12	0.11	0.38
Arkansas	0.38	0.25	-0.09	0.08	0.00	0.37	0.02	0.10	0.01	0.59
Florida	1.82	0.56	0.09	0.72	0.01	0.37	0.08	0.34	0.10	0.26
Georgia	0.51	0.44	0.24	0.33	0.01	0.34	0.04	0.13	0.06	0.47
Kentucky	0.00	0.23	-0.02	0.19	0.01	0.37	0.00	0.07	0.03	0.70
Louisiana	-0.41	-0.13	0.05	0.19	-0.02	-0.08	-0.05	0.00	-0.06	0.07
Mississippi	0.19	0.16	-0.14	0.23	0.01	0.20	-0.03	0.09	0.02	0.31
North Carolina	0.31	0.39	-0.05	0.16	0.02	0.33	0.00	0.11	0.02	0.64
South Carolina	0.57	0.31	-0.06	0.22	0.01	0.34	0.03	0.14	0.08	0.44
Tennessee	0.31	0.34	0.00	0.20	0.04	0.56	0.01	0.16	0.03	-0.03
Virginia	0.53	1.26	0.01	0.12	0.01	0.32	0.02	0.13	0.08	0.77
West Virginia	0.26	0.21	0.03	0.10	0.00	0.31	0.05	0.05	0.06	0.24
<b>Southwest</b>	<b>0.35</b>	<b>0.49</b>	<b>0.20</b>	<b>0.26</b>	<b>0.01</b>	<b>0.35</b>	<b>0.03</b>	<b>0.15</b>	<b>0.08</b>	<b>0.31</b>
Arizona	1.45	0.54	-0.18	0.65	0.05	0.59	0.04	0.26	0.11	0.45
New Mexico	0.08	0.33	0.02	0.16	0.01	0.37	0.03	0.13	0.08	0.35
Oklahoma	-0.05	0.22	-0.13	0.09	0.01	0.32	0.04	0.11	0.03	0.48
Texas	0.19	0.53	0.34	0.20	0.00	0.31	0.02	0.13	0.07	0.26
<b>Rocky Mountain</b>	<b>0.72</b>	<b>0.66</b>	<b>0.06</b>	<b>0.17</b>	<b>0.03</b>	<b>0.33</b>	<b>0.05</b>	<b>0.15</b>	<b>0.07</b>	<b>0.33</b>
Colorado	0.54	0.77	0.15	0.12	0.02	0.28	0.05	0.13	0.04	0.36
Idaho	1.23	0.51	-0.12	0.29	0.02	0.39	0.04	0.14	0.09	0.07
Montana	0.83	0.46	0.01	0.16	0.01	0.51	0.10	0.16	0.14	0.32
Utah	0.89	0.64	0.00	0.26	0.05	0.42	0.04	0.16	0.08	0.38
Wyoming	0.53	0.28	0.00	0.03	0.00	0.24	0.02	0.25	0.09	0.42
<b>Far West</b>	<b>0.46</b>	<b>0.60</b>	<b>-0.15</b>	<b>0.18</b>	<b>0.01</b>	<b>0.33</b>	<b>0.02</b>	<b>0.21</b>	<b>0.06</b>	<b>0.16</b>
Alaska	0.08	0.23	-0.01	0.10	0.00	0.14	0.03	0.06	0.01	0.63
California	0.49	0.68	-0.19	0.16	0.01	0.33	0.01	0.12	0.06	0.06
Hawaii	0.64	0.36	-0.27	0.27	0.01	0.38	0.07	0.52	0.13	1.45
Nevada	1.15	0.50	0.18	0.36	0.02	0.39	0.14	1.59	0.13	0.32
Oregon	0.65	0.32	0.07	0.22	0.01	0.42	0.02	0.14	0.06	0.19
Washington	-0.06	0.35	-0.12	0.18	0.00	0.31	0.04	0.15	0.06	0.37

Source: U.S. Bureau of Economic Analysis



**Table 3. GDP by State in Current Dollars, 2005**

[Millions of dollars]

State and region	Total	Agriculture, forestry, fishing, and hunting	Mining	Utilities	Construction	Durable goods manufacturing	Non-durable goods manufacturing	Wholesale trade	Retail trade	Transportation and warehousing	Information	Finance and insurance
<b>United States</b>	<b>12,409,555</b>	<b>119,066</b>	<b>213,574</b>	<b>238,908</b>	<b>593,535</b>	<b>868,438</b>	<b>628,103</b>	<b>733,090</b>	<b>828,634</b>	<b>362,247</b>	<b>578,345</b>	<b>1,011,548</b>
<b>New England</b>	<b>686,547</b>	<b>2,617</b>	<b>490</b>	<b>11,491</b>	<b>29,600</b>	<b>50,452</b>	<b>23,143</b>	<b>38,205</b>	<b>42,776</b>	<b>11,457</b>	<b>29,050</b>	<b>81,985</b>
Connecticut	193,745	340	108	3,357	6,927	14,178	7,795	10,449	11,458	3,015	7,707	32,341
Maine	44,971	656	8	936	2,406	2,613	2,359	2,474	4,037	1,016	1,347	3,006
Massachusetts	325,917	906	193	4,070	14,102	23,321	9,503	18,325	17,906	5,420	15,341	34,870
New Hampshire	55,061	241	55	1,791	2,754	5,043	1,557	3,523	4,658	885	1,942	4,785
Rhode Island	43,787	99	26	784	2,153	3,087	1,219	2,259	2,783	637	1,756	5,614
Vermont	23,065	375	100	553	1,258	2,210	711	1,175	1,934	484	958	1,369
<b>Mideast</b>	<b>2,262,524</b>	<b>6,755</b>	<b>5,048</b>	<b>45,583</b>	<b>88,445</b>	<b>86,100</b>	<b>107,844</b>	<b>128,928</b>	<b>131,665</b>	<b>51,695</b>	<b>128,545</b>	<b>262,411</b>
Delaware	56,483	414	(d)	942	(d)	1,060	3,144	1,935	2,437	730	1,218	19,174
District of Columbia	81,830	1	(d)	763	(d)	96	118	762	1,059	467	5,320	3,918
Maryland	246,234	781	296	6,033	15,018	6,369	7,189	12,751	15,893	5,065	10,072	17,497
New Jersey	431,079	623	262	7,917	17,850	13,055	27,979	34,985	27,766	12,836	20,268	36,808
New York	957,873	2,099	811	17,026	30,344	28,751	32,240	49,524	52,560	17,238	74,306	147,154
Pennsylvania	489,025	2,837	3,653	12,902	21,981	36,770	37,174	28,970	31,951	15,358	17,361	37,861
<b>Great Lakes</b>	<b>1,832,089</b>	<b>10,647</b>	<b>5,969</b>	<b>38,405</b>	<b>80,314</b>	<b>226,238</b>	<b>114,817</b>	<b>113,350</b>	<b>117,964</b>	<b>58,748</b>	<b>56,014</b>	<b>139,433</b>
Illinois	560,032	2,071	1,662	12,240	26,010	42,974	31,853	38,871	32,833	20,144	20,858	53,747
Indiana	238,568	1,686	910	5,214	10,549	44,407	22,800	12,846	15,262	8,397	5,412	13,964
Michigan	376,243	2,038	1,013	7,758	16,231	54,827	14,359	22,340	25,335	9,567	10,847	22,733
Ohio	440,923	1,922	2,061	9,717	17,535	57,112	28,166	26,682	30,647	13,530	12,410	32,957
Wisconsin	216,322	2,929	322	3,475	9,989	26,918	17,638	12,611	13,888	7,110	6,487	16,033
<b>Plains</b>	<b>795,735</b>	<b>18,358</b>	<b>5,554</b>	<b>13,530</b>	<b>35,607</b>	<b>70,301</b>	<b>47,275</b>	<b>51,193</b>	<b>52,285</b>	<b>30,945</b>	<b>33,406</b>	<b>67,621</b>
Iowa	113,552	3,707	207	2,082	4,783	14,043	10,667	6,599	7,156	4,187	3,495	11,234
Kansas	105,474	2,816	2,286	2,204	4,104	10,193	5,343	6,587	7,181	3,962	6,712	6,451
Minnesota	234,552	3,422	896	3,183	11,104	20,820	11,216	16,104	14,398	7,412	8,693	23,812
Missouri	216,065	2,011	1,076	3,493	10,184	17,243	15,105	13,979	14,997	7,837	10,124	13,378
Nebraska	70,676	3,122	139	1,343	3,021	4,199	3,473	4,230	4,552	5,737	2,571	5,916
North Dakota	24,397	1,472	812	661	1,144	1,474	731	1,982	1,795	992	925	1,463
South Dakota	30,919	1,808	138	564	1,267	2,328	740	1,713	2,206	819	886	5,366
<b>Southeast</b>	<b>2,786,296</b>	<b>28,231</b>	<b>39,217</b>	<b>52,148</b>	<b>148,940</b>	<b>179,270</b>	<b>182,910</b>	<b>168,016</b>	<b>203,132</b>	<b>89,976</b>	<b>116,136</b>	<b>185,369</b>
Alabama	151,610	2,520	2,672	3,774	7,399	16,223	10,770	8,690	12,084	4,296	4,939	8,148
Arkansas	86,752	2,401	972	1,838	3,841	9,210	7,665	5,798	6,268	4,336	3,120	3,884
Florida	673,274	6,216	859	10,665	47,723	22,026	11,721	43,623	53,425	18,052	28,977	49,717
Georgia	363,839	3,343	1,147	7,414	18,680	18,938	27,138	28,420	24,328	13,323	23,585	22,604
Kentucky	140,501	2,290	3,410	2,223	5,998	16,213	10,827	8,596	9,788	6,793	3,755	7,112
Louisiana	168,204	1,302	20,489	4,635	7,997	6,741	20,834	8,210	11,403	5,969	4,147	6,818
Mississippi	81,290	2,085	2,042	2,247	3,536	7,798	4,848	4,170	6,772	2,916	2,073	3,662
North Carolina	346,640	3,725	559	6,208	16,549	25,202	42,031	19,387	23,053	8,514	12,573	36,286
South Carolina	140,019	1,162	218	3,563	7,997	13,658	11,253	8,261	11,360	3,432	3,881	7,223
Tennessee	229,215	1,384	544	888	9,635	24,986	15,931	15,350	18,887	11,719	7,687	13,210
Virginia	351,903	1,533	1,848	6,276	18,304	15,119	17,504	14,919	21,511	8,742	19,938	24,576
West Virginia	53,050	271	4,456	2,416	2,182	3,155	2,388	2,591	4,252	1,885	1,462	2,128
<b>Southwest</b>	<b>1,396,331</b>	<b>13,376</b>	<b>113,912</b>	<b>38,618</b>	<b>74,080</b>	<b>93,957</b>	<b>65,999</b>	<b>86,402</b>	<b>96,624</b>	<b>47,090</b>	<b>53,596</b>	<b>88,615</b>
Arizona	216,528	2,062	2,026	3,835	15,579	17,009	2,635	12,510	18,203	6,082	6,678	19,479
New Mexico	68,870	1,123	8,781	1,473	3,133	5,447	1,041	2,372	4,654	1,838	1,802	2,441
Oklahoma	121,490	2,015	15,764	3,169	4,735	7,395	4,426	6,006	8,633	3,954	4,306	5,791
Texas	989,443	8,176	87,341	30,141	50,633	64,106	57,897	65,515	65,133	35,216	40,809	60,905
<b>Rocky Mountain</b>	<b>411,658</b>	<b>6,201</b>	<b>20,777</b>	<b>6,775</b>	<b>25,136</b>	<b>22,459</b>	<b>10,204</b>	<b>21,262</b>	<b>27,901</b>	<b>13,284</b>	<b>24,895</b>	<b>26,911</b>
Colorado	216,537	1,823	8,591	2,525	13,669	9,217	4,758	11,489	13,404	5,650	18,729	14,123
Idaho	47,189	2,168	203	783	2,811	4,897	1,410	2,605	4,043	1,336	1,180	2,404
Montana	29,885	1,232	1,342	1,055	1,930	900	552	1,631	2,199	1,333	901	1,493
Utah	90,778	551	2,377	1,163	5,292	7,086	2,736	4,599	6,762	3,362	3,654	8,161
Wyoming	27,269	426	8,265	1,250	1,434	360	748	938	1,493	1,603	431	731
<b>Far West</b>	<b>2,238,377</b>	<b>32,880</b>	<b>22,607</b>	<b>32,359</b>	<b>111,412</b>	<b>139,660</b>	<b>75,911</b>	<b>125,733</b>	<b>156,286</b>	<b>59,051</b>	<b>136,703</b>	<b>159,203</b>
Alaska	39,314	357	10,672	401	1,932	151	758	786	1,805	3,951	997	1,211
California	1,622,116	23,132	9,685	24,906	76,487	95,590	61,559	92,548	113,903	37,577	107,120	120,795
Hawaii	54,019	339	45	899	3,157	271	611	1,913	3,995	2,060	1,389	2,459
Nevada	111,342	233	1,757	1,808	10,639	2,720	1,382	4,313	8,382	3,383	2,509	10,308
Oregon	144,278	3,707	187	1,857	6,233	22,934	4,240	9,529	8,189	4,136	4,476	8,019
Washington	267,308	5,112	262	2,488	12,963	17,994	7,361	16,645	20,012	7,944	20,212	16,410

(d) Data are suppressed to avoid disclosure of confidential information.

Source: U.S. Bureau of Economic Analysis

**Table 3. GDP by State in Current Dollars, 2005 (continued)**

(Millions of dollars)

State and region	Real estate, rental, and leasing	Professional and technical services	Management of companies	Administrative and waste services	Educational services	Health care and social assistance	Arts, entertainment, and recreation	Accommodation and food services	Other services	Government
<b>United States</b>	<b>1,562,863</b>	<b>862,365</b>	<b>230,634</b>	<b>375,531</b>	<b>113,082</b>	<b>864,355</b>	<b>117,921</b>	<b>337,957</b>	<b>294,611</b>	<b>1,474,748</b>
<b>New England</b>	<b>97,800</b>	<b>58,454</b>	<b>14,557</b>	<b>18,248</b>	<b>13,533</b>	<b>58,838</b>	<b>5,996</b>	<b>17,029</b>	<b>14,810</b>	<b>66,017</b>
Connecticut	26,906	14,261	5,732	5,104	2,833	14,691	1,833	3,527	3,939	17,244
Maine	6,062	2,110	393	1,017	443	4,825	399	1,417	1,033	6,415
Massachusetts	47,576	35,202	6,727	9,195	7,864	28,502	2,726	8,167	6,994	29,007
New Hampshire	8,322	3,349	781	1,430	960	4,547	461	1,640	1,308	5,030
Rhode Island	6,266	2,256	889	1,066	954	4,103	382	1,242	973	5,239
Vermont	2,667	1,276	35	436	478	2,170	194	1,035	563	3,083
<b>Mideast</b>	<b>312,918</b>	<b>195,615</b>	<b>49,971</b>	<b>62,959</b>	<b>32,754</b>	<b>174,223</b>	<b>20,498</b>	<b>53,932</b>	<b>55,189</b>	<b>261,445</b>
Delaware	6,077	3,609	2,219	1,016	263	2,951	374	883	977	4,859
District of Columbia	6,949	16,336	757	2,180	2,081	3,655	501	2,495	5,143	28,153
Maryland	38,119	25,154	1,518	7,455	3,005	18,032	1,842	6,849	6,383	40,911
New Jersey	69,515	35,770	9,242	13,804	3,694	30,661	3,805	10,888	9,125	44,228
New York	136,510	79,946	26,955	25,479	14,471	73,547	10,407	22,144	20,420	95,941
Pennsylvania	55,748	34,800	9,281	13,025	9,240	45,377	3,570	10,673	13,142	47,353
<b>Great Lakes</b>	<b>211,389</b>	<b>117,387</b>	<b>42,814</b>	<b>53,815</b>	<b>14,611</b>	<b>135,480</b>	<b>16,549</b>	<b>41,270</b>	<b>44,290</b>	<b>192,585</b>
Illinois	70,428	46,303	13,990	17,330	5,677	36,492	5,209	13,106	13,568	54,666
Indiana	22,627	9,110	2,602	6,192	1,773	17,422	3,215	5,247	5,658	23,274
Michigan	45,435	29,515	8,647	13,305	2,235	28,381	3,385	8,251	8,817	41,225
Ohio	47,594	23,516	12,890	12,324	3,226	35,326	3,193	9,831	11,155	49,128
Wisconsin	25,305	8,943	4,684	4,665	1,700	17,858	1,546	4,834	5,092	24,292
<b>Plains</b>	<b>82,212</b>	<b>40,283</b>	<b>19,827</b>	<b>19,295</b>	<b>6,913</b>	<b>60,539</b>	<b>7,228</b>	<b>18,602</b>	<b>19,142</b>	<b>95,616</b>
Iowa	10,385	3,472	867	2,238	973	7,898	1,211	2,308	2,537	13,503
Kansas	9,605	5,785	1,229	3,062	561	7,462	490	2,501	2,518	14,523
Minnesota	28,956	13,677	8,157	5,493	1,872	18,802	1,820	5,156	5,608	23,951
Missouri	21,958	12,500	8,006	5,869	2,590	16,270	2,892	5,739	5,438	25,377
Nebraska	6,352	3,237	1,147	1,758	588	5,214	395	1,480	1,698	10,503
North Dakota	2,143	827	199	412	107	2,194	123	600	591	3,751
South Dakota	2,813	785	222	465	222	2,699	298	820	752	4,007
<b>Southeast</b>	<b>326,680</b>	<b>168,164</b>	<b>43,317</b>	<b>96,789</b>	<b>19,166</b>	<b>188,232</b>	<b>26,554</b>	<b>82,134</b>	<b>67,724</b>	<b>374,190</b>
Alabama	14,219	8,556	1,141	3,624	700	10,809	568	3,484	4,018	22,975
Arkansas	7,854	3,263	1,797	1,759	365	6,593	377	1,950	1,938	11,523
Florida	110,650	41,517	9,009	36,060	4,487	48,379	11,052	25,289	18,133	75,691
Georgia	41,528	22,878	7,513	12,682	2,912	21,204	2,260	9,573	7,491	46,879
Kentucky	12,372	5,535	1,588	3,282	793	11,413	869	3,735	3,218	20,688
Louisiana	13,219	6,839	2,718	3,913	1,216	10,542	2,692	4,861	3,670	20,890
Mississippi	7,174	2,697	828	1,608	463	5,721	842	3,358	2,255	14,194
North Carolina	32,429	16,514	7,477	9,089	2,611	21,902	2,341	8,134	7,116	44,941
South Carolina	15,094	6,119	744	5,411	740	8,287	1,040	4,755	3,503	22,318
Tennessee	23,131	11,850	2,589	9,115	2,199	19,649	2,131	7,196	6,289	24,845
Virginia	44,280	40,329	7,533	9,134	2,421	18,699	1,849	8,335	8,813	60,236
West Virginia	4,729	2,067	378	1,111	258	5,034	533	1,463	1,280	9,010
<b>Southwest</b>	<b>138,360</b>	<b>84,950</b>	<b>21,354</b>	<b>44,389</b>	<b>7,686</b>	<b>85,509</b>	<b>8,920</b>	<b>36,363</b>	<b>30,461</b>	<b>166,070</b>
Arizona	30,352	12,130	2,285	9,714	1,546	14,873	2,026	7,166	4,331	26,006
New Mexico	6,580	4,503	327	1,892	320	4,458	420	1,962	1,432	12,872
Oklahoma	10,749	5,154	1,580	3,438	632	8,188	640	2,743	2,831	19,339
Texas	90,678	63,164	17,163	29,343	5,188	57,990	5,833	24,492	21,866	107,854
<b>Rocky Mountain</b>	<b>51,645</b>	<b>30,444</b>	<b>5,702</b>	<b>11,475</b>	<b>2,633</b>	<b>24,524</b>	<b>4,608</b>	<b>11,709</b>	<b>10,031</b>	<b>53,079</b>
Colorado	30,080	18,759	3,266	6,736	1,268	12,525	2,901	6,436	4,916	25,673
Idaho	5,688	3,338	685	1,352	262	3,113	381	1,174	959	6,397
Montana	3,448	1,424	63	606	119	2,674	397	994	770	4,823
Utah	10,239	6,163	1,608	2,485	929	5,091	747	2,271	2,940	12,563
Wyoming	2,190	760	81	296	55	1,120	183	834	447	3,624
<b>Far West</b>	<b>341,859</b>	<b>167,068</b>	<b>33,091</b>	<b>68,560</b>	<b>15,785</b>	<b>137,010</b>	<b>27,567</b>	<b>76,919</b>	<b>52,966</b>	<b>265,747</b>
Alaska	3,035	1,361	122	672	117	2,095	290	981	630	6,990
California	259,606	134,141	23,392	50,624	12,456	96,911	20,201	43,880	39,174	178,431
Hawaii	8,835	2,464	637	1,864	541	3,650	656	4,792	1,420	12,022
Nevada	14,184	5,511	2,726	3,504	260	5,473	3,143	16,589	1,912	10,607
Oregon	19,005	6,793	2,760	3,747	936	10,571	904	3,550	3,090	19,413
Washington	37,194	16,797	3,454	8,150	1,475	18,310	2,373	7,127	6,741	38,284

Source: U.S. Bureau of Economic Analysis